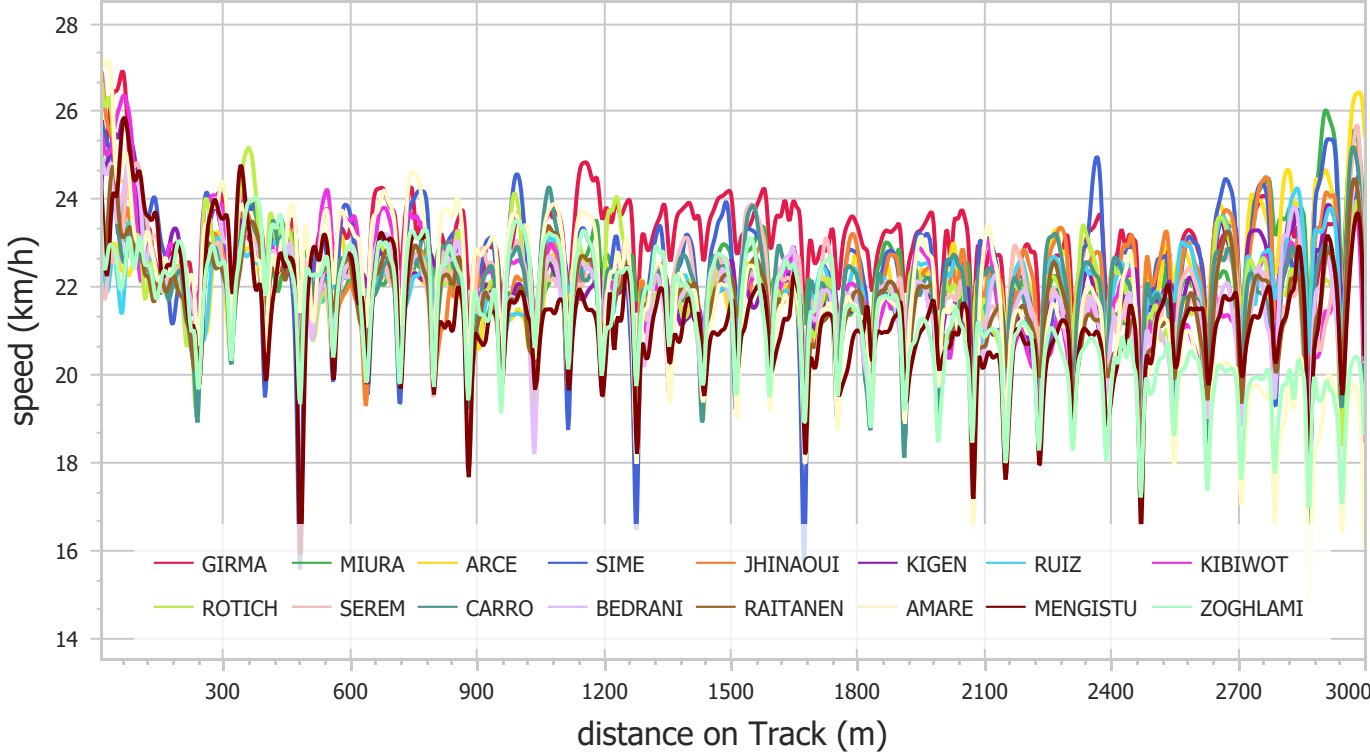


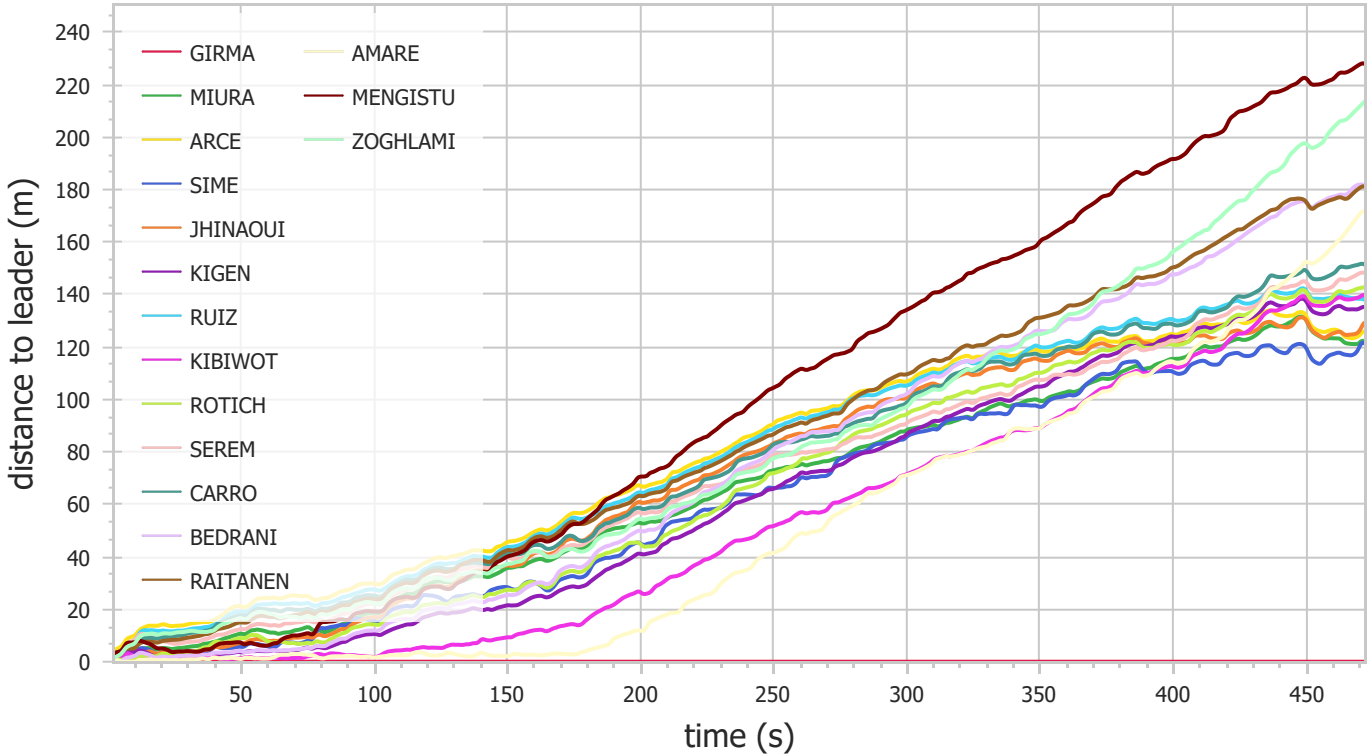
Paris 2023 - Race Analysis

3000m Steeplechase Men (Fri 09 Jun 2023)

Speed



Distance to leader



Paris 2023 - Race Analysis

3000m Steeplechase Men (Fri 09 Jun 2023)

Split Times

	400m 2500m	800m 2600m	1000m 2700m	1200m 2800m	1600m 2900m	2000m Finish	2400m
GIRMA	1:03.42 6:32.41	2:06.01 6:48.33	2:37.73 7:04.24	3:08.57 7:19.94	4:09.93 7:36.40	5:12.53 7:52.11	6:16.29
MIURA	1:05.18 6:51.56	2:10.89 7:08.01	2:43.91 7:24.52	3:16.47 7:39.98	4:21.44 7:55.29	5:27.46 8:09.91	6:34.63
ARCE	1:07.40 6:53.00	2:12.48 7:09.04	2:45.82 7:24.89	3:18.72 7:40.50	4:24.73 7:55.89	5:31.05 8:10.63	6:36.29
SIME	1:04.53 6:50.66	2:09.86 7:07.01	2:42.29 7:22.71	3:15.15 7:38.99	4:20.61 7:55.25	5:27.38 8:10.73	6:34.15
JHINAOU	1:04.75 6:52.23	2:10.83 7:08.38	2:44.31 7:24.24	3:17.61 7:40.28	4:23.46 7:56.76	5:30.07 8:12.19	6:36.03
KIGEN	1:04.09 6:52.77	2:08.96 7:09.28	2:41.61 7:25.60	3:14.36 7:41.86	4:20.92 7:58.04	5:27.91 8:13.49	6:36.07
RUIZ	1:06.95 6:54.00	2:12.01 7:10.18	2:45.56 7:26.30	3:18.23 7:42.56	4:24.40 7:58.22	5:30.76 8:13.89	6:37.27
KIBIWOT	1:03.67 6:51.24	2:06.95 7:08.53	2:39.54 7:25.69	3:12.09 7:42.38	4:18.41 7:59.46	5:25.20 8:16.13	6:34.31
ROTICH	1:04.66 6:52.54	2:09.70 7:09.63	2:42.31 7:26.07	3:15.41 7:42.76	4:21.85 7:59.78	5:28.99 8:16.27	6:35.77
SEREM	1:05.70 6:53.31	2:11.49 7:09.91	2:44.23 7:26.71	3:17.06 7:43.52	4:22.22 8:00.94	5:28.33 8:16.94	6:35.77
CARRO	1:06.58 6:53.80	2:11.81 7:10.74	2:44.67 7:27.38	3:17.33 7:44.34	4:23.17 8:01.17	5:30.51 8:17.06	6:37.04
BEDRANI	1:04.12 6:57.47	2:09.39 7:14.85	2:42.44 7:31.96	3:15.85 7:49.20	4:23.38 8:05.50	5:31.07 8:21.70	6:40.08
RAITANEN	1:06.13 6:58.21	2:11.74 7:15.29	2:45.35 7:31.90	3:17.99 7:48.89	4:24.12 8:06.04	5:31.82 8:22.00	6:40.55
AMARE	1:03.80 6:51.85	2:06.51 7:09.42	2:38.13 7:27.65	3:09.84 7:46.85	4:17.00 8:06.18	5:25.20 8:25.25	6:34.39
MENGISTU	1:04.68 7:05.92	2:10.66 7:22.85	2:45.11 7:39.78	3:19.17 7:56.88	4:27.58 8:13.95	5:36.87 8:30.23	6:47.96
ZOGLAMI	1:06.18 6:59.86	2:11.17 7:17.75	2:44.23 7:36.06	3:16.47 7:54.73	4:22.73 8:13.23	5:30.84 8:31.88	6:41.71

Paris 2023 - Race Analysis

3000m Steeplechase Men (Fri 09 Jun 2023)

Section Times

	400m 2500m	800m 2600m	1000m 2700m	1200m 2800m	1600m 2900m	2000m Finish	2400m
GIRMA	1:03.42	1:02.59	31.72	30.84	1:01.36	1:02.60	1:03.76
	6:32.41	15.92	15.91	15.70	16.46	15.71	
MIURA	1:05.18	1:05.71	33.02	32.56	1:04.97	1:06.02	1:07.17
	6:51.56	16.45	16.51	15.46	15.31	14.62	
ARCE	1:07.40	1:05.08	33.34	32.90	1:06.01	1:06.32	1:05.24
	6:53.00	16.04	15.85	15.61	15.39	14.74	
SIME	1:04.53	1:05.33	32.43	32.86	1:05.46	1:06.77	1:06.77
	6:50.66	16.35	15.70	16.28	16.26	15.48	
JHINAOUI	1:04.75	1:06.08	33.48	33.30	1:05.85	1:06.61	1:05.96
	6:52.23	16.15	15.86	16.04	16.48	15.43	
KIGEN	1:04.09	1:04.87	32.65	32.75	1:06.56	1:06.99	1:08.16
	6:52.77	16.51	16.32	16.26	16.18	15.45	
RUIZ	1:06.95	1:05.06	33.55	32.67	1:06.17	1:06.36	1:06.51
	6:54.00	16.18	16.12	16.26	15.66	15.67	
KIBIWOT	1:03.67	1:03.28	32.59	32.55	1:06.32	1:06.79	1:09.11
	6:51.24	17.29	17.16	16.69	17.08	16.67	
ROTICH	1:04.66	1:05.04	32.61	33.10	1:06.44	1:07.14	1:06.78
	6:52.54	17.09	16.44	16.69	17.02	16.49	
SEREM	1:05.70	1:05.79	32.74	32.83	1:05.16	1:06.11	1:07.44
	6:53.31	16.60	16.80	16.81	17.42	16.00	
CARRO	1:06.58	1:05.23	32.86	32.66	1:05.84	1:07.34	1:06.53
	6:53.80	16.94	16.64	16.96	16.83	15.89	
BEDRANI	1:04.12	1:05.27	33.05	33.41	1:07.53	1:07.69	1:09.01
	6:57.47	17.38	17.11	17.24	16.30	16.20	
RAITANEN	1:06.13	1:05.61	33.61	32.64	1:06.13	1:07.70	1:08.73
	6:58.21	17.08	16.61	16.99	17.15	15.96	
AMARE	1:03.80	1:02.71	31.62	31.71	1:07.16	1:08.20	1:09.19
	6:51.85	17.57	18.23	19.20	19.33	19.07	
MENGISTU	1:04.68	1:05.98	34.45	34.06	1:08.41	1:09.29	1:11.09
	7:05.92	16.93	16.93	17.10	17.07	16.28	
ZOGLAMI	1:06.18	1:04.99	33.06	32.24	1:06.26	1:08.11	1:10.87
	6:59.86	17.89	18.31	18.67	18.50	18.65	

Paris 2023 - Race Analysis

3000m Steeplechase Men (Fri 09 Jun 2023)

Summary

	Lane	Starting Order	Real Distance
GIRMA	1	18	3003.3 m
MIURA	1	3	3000.3 m
ARCE	1	4	3000.0 m
SIME	1	6	3005.0 m
JHINAOUI	1	7	3000.0 m
KIGEN	1	12	3006.8 m
RUIZ	1	11	3000.0 m
KIBIWOT	1	14	3000.8 m
ROTICH	1	10	3000.0 m
SEREM	1	1	3000.0 m
CARRO	1	9	3004.4 m
BEDRANI	1	13	3000.0 m
RAITANEN	1	8	3000.0 m
AMARE	1	15	3000.0 m
MENGISTU	1	5	3000.0 m
ZOGLAMI	1	2	3005.3 m

Did Not Finish: ABOUJANAH, KIPSANG